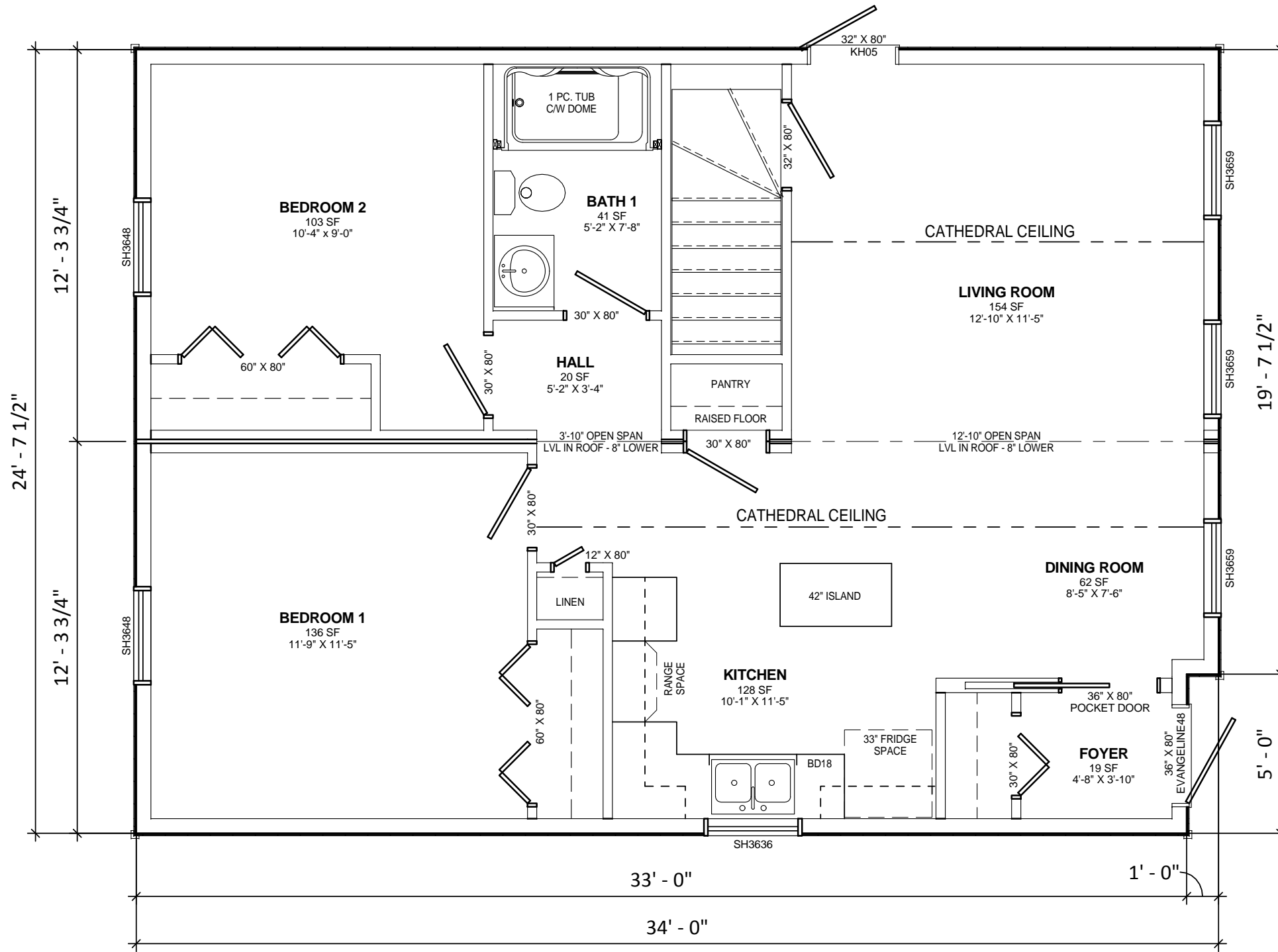


ISSUED FOR REVIEW ONLY
NOT FOR CONSTRUCTION



Kent Homes
It makes beautiful sense

28 CHEMIN DU COUVENT
BOUCTOUCHE, NB
E4S 3B9

TEL.: (506) 743-2481
FAX.: (506) 743-2660
WWW.KENTHOMES.COM

PROPRIETARY COPYRIGHT 2014 KENT HOMES
THIS DRAWING WILL REMAIN THE PROPERTY OF KENT HOMES
WHETHER THE PROJECT FOR WHICH IT WAS MADE IS
EXECUTED OR NOT. THEY ARE NOT TO BE USED BY THE CLIENT
ON ANY OTHER PROJECTS OR EXTENSIONS TO THIS PROJECT,
EXCEPT BY AGREEMENT AND APPROPRIATE COMPENSATION
TO KENT HOMES.

DISCLAIMER
THIS DESIGN DOCUMENT IS PREPARED SOLELY FOR THE USE BY
THE PARTY WITH WHOM KENT HOMES HAS ENTERED INTO A
CONTRACT AND THERE ARE NO REPRESENTATIONS OF ANY KIND
MADE BY KENT HOMES HAS NOT ENTERED INTO CONTRACT.

NO.	DESCRIPTION	DATE

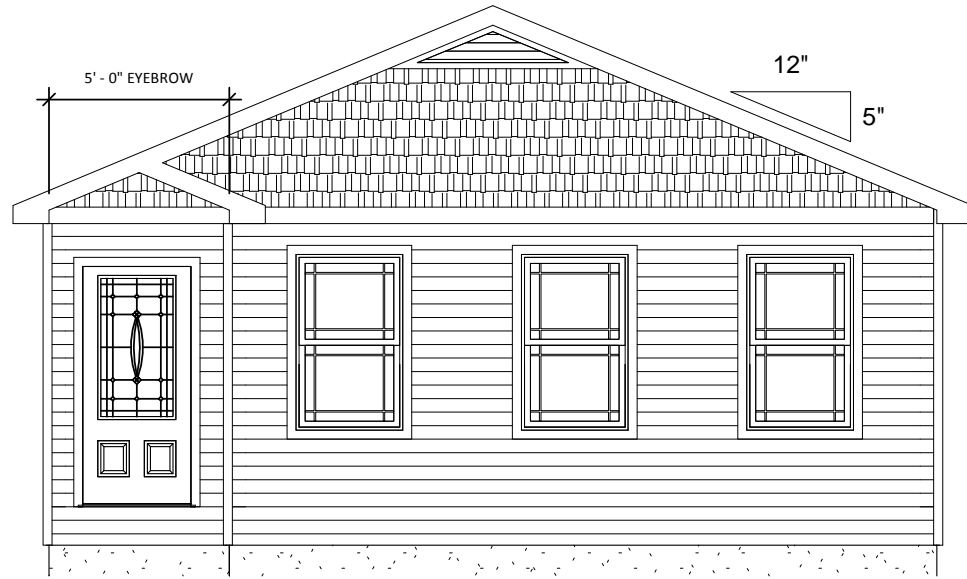
DRAWN BY:	H.D.
CHK BY:	ENG
DATE:	NOVEMBER 1, 2016
SCALE:	1/4" = 1'-0"
PROJECT NO.:	B4217-16-R2 - BLACKLINE
TYPE:	24'-6" X 34'-0" BUNGALOW

TITLE: **10m LOTS - ST JOHN'S**

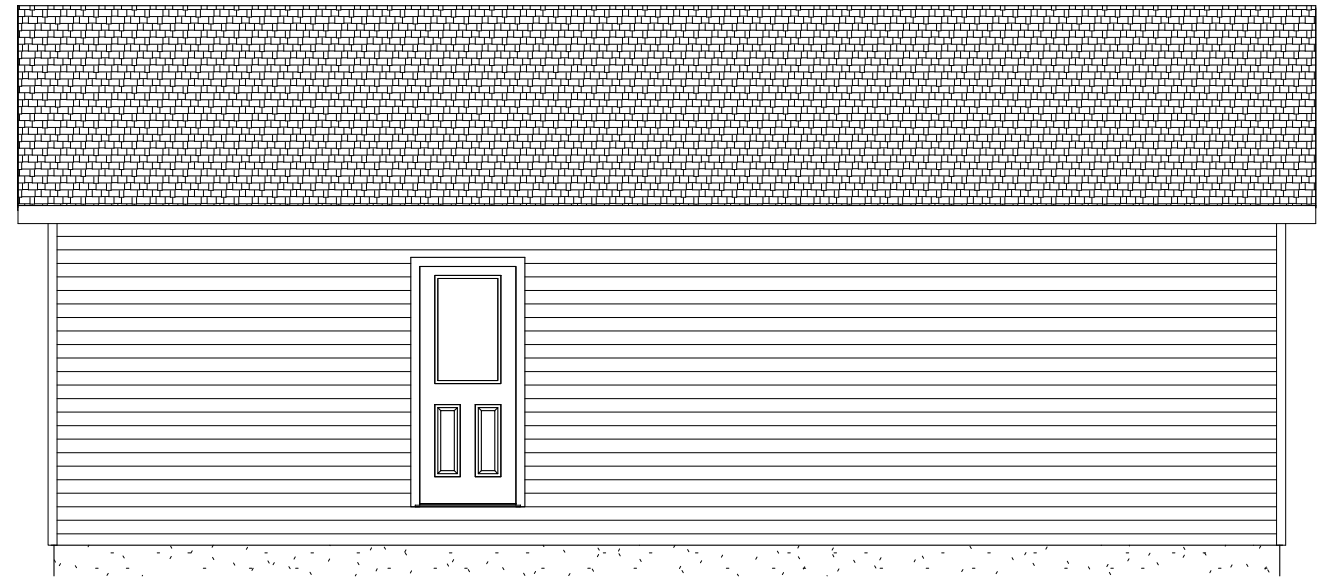
LEVEL 1 PLAN

HOMEWORX

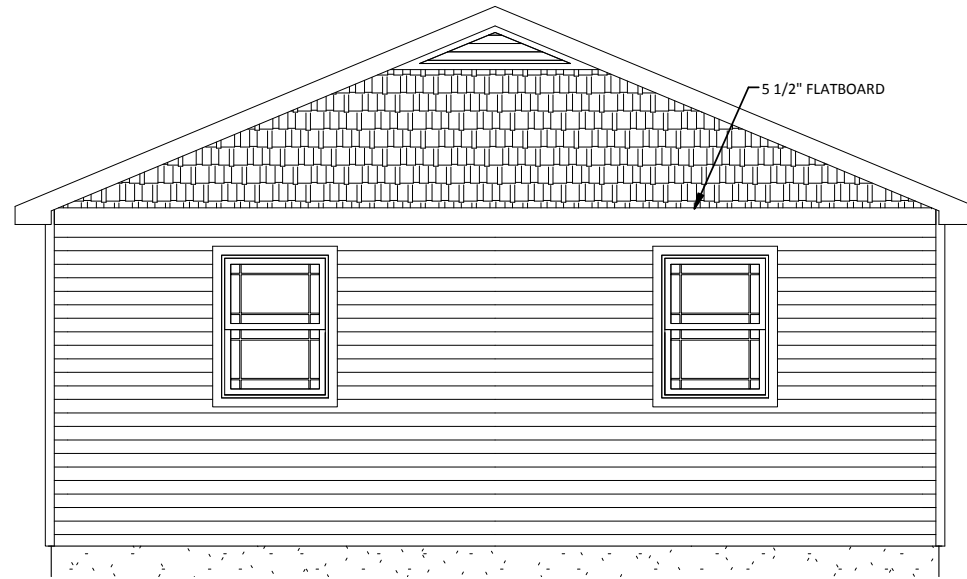
SHEET NO.: **2A-101**



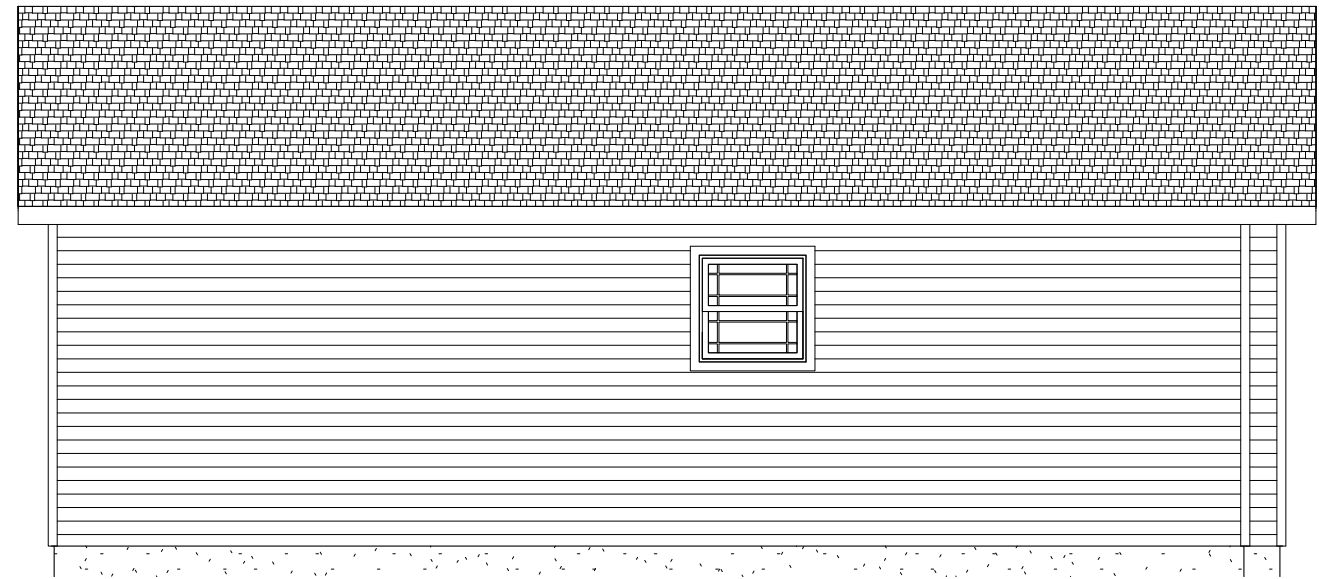
FRONT ELEVATION



RIGHT ELEVATION



REAR ELEVATION



LEFT ELEVATION

ISSUED FOR REVIEW ONLY
NOT FOR CONSTRUCTION

Kent Homes
It makes beautiful sense

28 CHEMIN DU COUVENT TEL.: (506) 743-2481
BOUCTOUCHE, NB FAX.: (506) 743-2660
E4S 3B9 WWW.KENTHOMES.COM

PROPRIETARY COPYRIGHT 2014 KENT HOMES
THIS DRAWING WILL REMAIN THE PROPERTY OF KENT HOMES
WHETHER THE PROJECT FOR WHICH IT WAS MADE IS
EXECUTED OR NOT. THEY ARE NOT TO BE USED BY THE CLIENT
ON ANY OTHER PROJECTS OR EXTENSIONS TO THIS PROJECT,
EXCEPT BY AGREEMENT AND APPROPRIATE COMPENSATION
TO KENT HOMES.

DISCLAIMER
THIS DESIGN DOCUMENT IS PREPARED SOLELY FOR THE USE BY
THE PARTY WITH WHOM KENT HOMES HAS ENTERED INTO A
CONTRACT AND THERE ARE NO REPRESENTATIONS OF ANY KIND
MADE BY KENT HOMES HAS NOT ENTERED INTO CONTRACT.

NO.	DESCRIPTION	DATE

DRAWN BY:	H.D.
CHK BY:	ENG
DATE:	NOVEMBER 1, 2016
SCALE:	3/16" = 1'-0"
PROJECT NO.:	B4217-16-R2 - BLACKLINE
TYPE:	24'-6" X 34'-0" BUNGALOW

TITLE:	10m LOTS - ST JOHN'S
	ELEVATIONS
	HOMEWORX
SHEET NO.:	2A-601